



www.sterlinghomes.co.uk

01923 270 666  
Kings Langley, Abbots  
Langley & Watford;

01442 822 210  
Property  
Management

01442 879 996  
Berkhamsted Select  
& Country Homes;

01442 828 222  
Tring, Wendover,  
Aylesbury & Villages;

Is there a price that would tempt you to sell or let your property? Contact us for a free valuation and let's see if we can tempt you!

# Temptation comes in many forms...



PROPOSED SITE PLAN

Schedule of Accommodation			
	4 bed	3 bed	Totals
Totals	3	2	5
Parking spaces	9	8	17



**Berkhamsted**

OFFERS IN THE REGION OF £2,500,000

# Berkhamsted

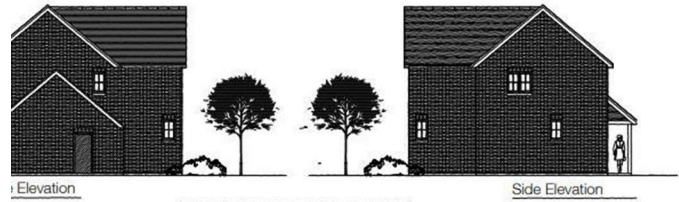
OFFERS IN THE REGION OF

£2,500,000

A rare chance to purchase a site which has consent for the construction of 5 executive detached dwellings in a prime residential location in the popular Berkhamsted village of Potten End. Contact Sterling for more information on the new build units.



Front Elevation



Side Elevation



Rear Elevation



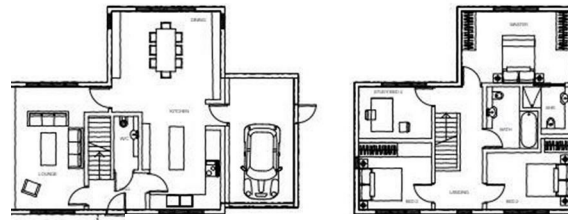
Front Elevation



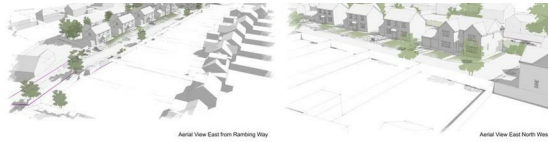
Side Elevation



Rear Elevation



Ground Floor



Aerial View East from Parking Way

Aerial View East North West



View North - Street Scene

to your children's preferences

After achieving several successful planning applications recently, Sterling Land Department urgently require more land for development clients. We are happy to advise on any land sites or large gardens in the district of confidence and without charge.

Please contact Ben Bird, company owner via email at benbird@sterlinghomes.co.uk or call him on 01442 828 222. You may be genuinely surprised at the prices we can achieve for your land.

Plan

[www.sterlinghomes.co.uk](http://www.sterlinghomes.co.uk)



Energy Efficiency Rating		Environmental Impact (CO <sub>2</sub> ) Rating	
Current	Potential	Current	Potential
(92 plus) A		(92 plus) A	
(81-91) B		(81-91) B	
(69-80) C		(69-80) C	
(55-68) D		(55-68) D	
(39-54) E		(39-54) E	
(21-38) F		(21-38) F	
(1-20) G		(1-20) G	
Not energy efficient - higher running costs		Not environmentally friendly - higher CO <sub>2</sub> emissions	
England & Wales	EU Directive 2002/91/EC	England & Wales	EU Directive 2002/91/EC

[www.sterlinghomes.co.uk](http://www.sterlinghomes.co.uk)



[www.sterlinghomes.co.uk](http://www.sterlinghomes.co.uk)



[www.sterlinghomes.co.uk](http://www.sterlinghomes.co.uk)



[www.sterlinghomes.co.uk](http://www.sterlinghomes.co.uk)

